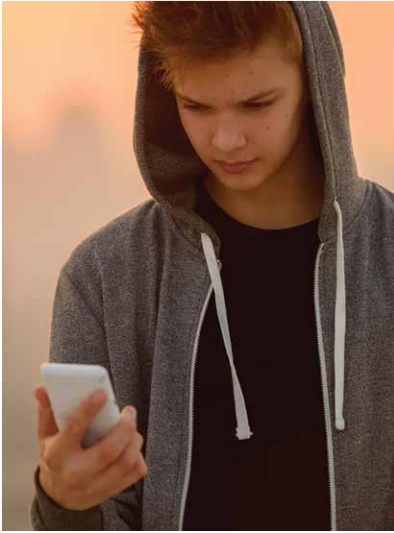




Eosinophilic Gastritis Study  
for Children, Teens and Adults  
12 to 60 Years Old



### **What is the reason for this study?**

This study will test the effectiveness of an experimental drug called Benralizumab. In this study, Benralizumab is considered an experimental drug because it has not been approved by the FDA to treat people with eosinophilic gastritis. Benralizumab has been approved, however, to treat adolescents and adults with eosinophilic asthma.

### **Am I eligible to participate?**

The criteria for participation include:

- Diagnosed with eosinophilic gastritis or eosinophilic gastroenteritis
- Disease involves the stomach
- Age 12 to 60 years old

### **How will the study be conducted?**

You'll be assigned by chance (like the flip of a coin) to receive Benralizumab or placebo. A placebo is an inactive substance. You and your doctor won't know if you're receiving Benralizumab or placebo.

The study has three phases:

- Screening phase which can last up to 8 weeks
- Treatment phase which is 12 weeks long
- Optional Open Label Extension phase which is an additional 24 weeks long

During the treatment phase you'll receive the drug or placebo as an injection under the skin on three different occasions, four weeks apart.



You'll have three endoscopies during the time that you are in the study in order to examine the lining of your stomach, esophagus and small intestine. With your permission, your doctor will take four biopsies during each endoscopy. The biopsies will help doctors determine if you are getting better.

There is no need to change your diet or alter your medication routine during the study.

### **Will I be paid to be in the study?**

Yes, payment is determined by the number of phases in which you participate. If you're eligible to complete all phases you'll receive up to \$600 by the end of the study. Additional compensation for travel is available to partially cover expenses for hotels and/or airfare.

### **How can I learn more?**

Contact the study coordinators, Cristin Murray-Petzold, at 513-803-9079 or email [Cristin.MurrayPetzold@cchmc.org](mailto:Cristin.MurrayPetzold@cchmc.org)

### **Contacts:**

STUDY DOCTOR  
Marc E. Rothenberg, MD, PhD  
513-803-0257  
[marc.rothenberg@cchmc.org](mailto:marc.rothenberg@cchmc.org)

STUDY COORDINATOR  
Cristin Murray-Petzold  
513-803-9079  
[Cristin.MurrayPetzold@cchmc.org](mailto:Cristin.MurrayPetzold@cchmc.org)

## LEARN MORE

To learn more about the Eosinophilic Gastritis Study, or to find out if you are eligible, contact study coordinator Cristin Murray Petzold at **513-803-9079** or [Cristin.MurrayPetzold@cchmc.org](mailto:Cristin.MurrayPetzold@cchmc.org)



CCHMC IRB # 2017-1701

BRV308516